

MICROFILMED  
SEP 12 1986

# STATE OF OHIO DEPARTMENT OF HIGHWAYS CUY-42R-19.78 CUYAHOGA COUNTY CITY OF CLEVELAND

I-1057(3)

LIMITED ACCESS

CUY-98-17.74

FED. RD. DIVISION	STATE	PROJECT	TYPE FUNDS
2	OHIO	I-1057(3)	

CUYAHOGA COUNTY  
CUY-42R-19.78

MAR 13 1962  
GROUND PHOTO LAB

This improvement is especially designed for through traffic and has been declared a Limited Access Highway or Freeway by action of the Director of Highways in accordance with the provisions of Section 5511.02 of the Revised Code of Ohio.

The Standard Specifications of the State of Ohio Department of Highways including changes and Supplemental Specifications listed in the proposal shall govern this improvement.

I hereby approve these plans and declare that the making of this improvement will not require the closing to traffic of any State Highways. Except as noted in "MAINTAINING TRAFFIC" Item of GENERAL NOTES. See Sheet No. 15 and that provisions for the maintenance and safety of traffic will be as set forth on the plans and estimates.

The Right of Way necessary for this improvement will be provided by the State of Ohio.

Approved Arthur A. Evans  
Date 5-2-56 Division Deputy Director

Approved John J. Heier  
Date 6-22-56 Deputy Director of Planning and Programming

Approved W. H. Gorman  
Date 6-21-56 Engineer of Bridges

Approved B. S. Dutton  
Date 6-22-56 Engineer of Location and Design

Approved H. F. Lenz  
Date 6-22-56 Deputy Director of Design and Construction

Approved V. P. Schaublin  
Date 6-22-56 First Assistant Director

Approved J. O. Amell  
Date 6-22-56 Director of Highways

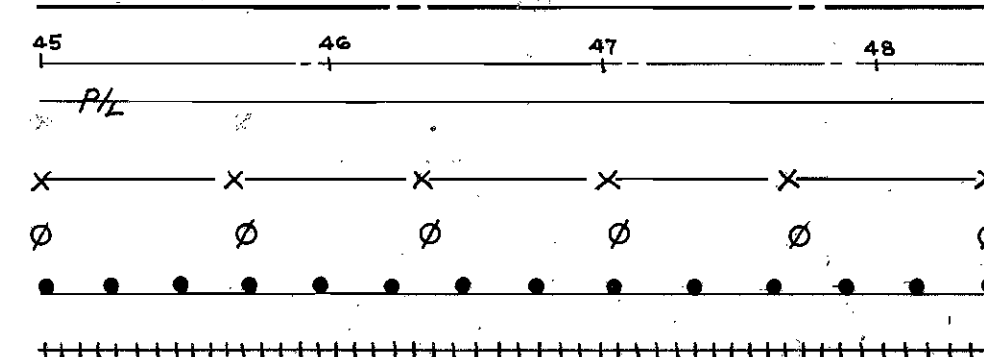
Approved Louis E. Drasler  
Date 5-2-56 For The City of Cleveland  
Director of Public Service

Approved F. H. Simpson, Chief Engineer  
Date 7-13-56 For New York Central Railroad Co.

Approved D. L. Sommerville, Area Engineer  
Date 9-28-56 For Pennsylvania Railroad Co.

## CONVENTIONAL SIGNS

CORPORATION LINE  
CENTER LINE  
PROPERTY LINE  
FENCE LINE  
POLE LINE  
GUARD RAIL  
RAIL ROAD



## INDEX OF SHEETS

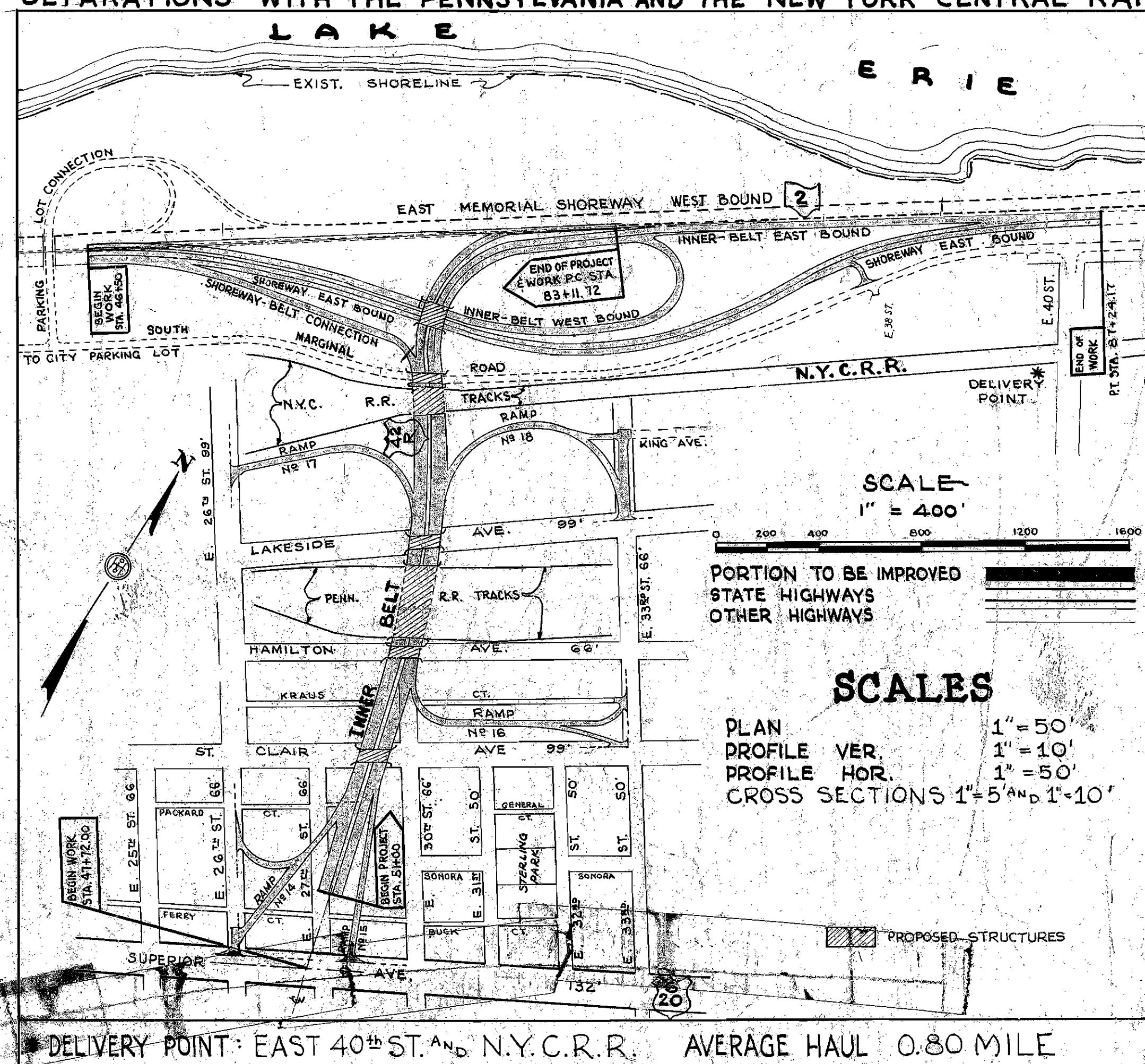
Title Sheet	1
Location Map & Overhead Sign Data	2
Typical Sections	3-13
General Notes	14-15
Summary of Quantities	16-18
Pavement Calculations	19-22
General Summary	23-24
Plan & Profile Sheets & Mon. Ref. Sheet	25-49
Extra Area Details	50-61
Superelevation Tables	62-64
Right of Way Sheets	65-73
Cross Sections	74-118
Driveway Details	119-121
Drainage & Other Details	122-129
Street Lighting Plans	130-138
Bridge Plans	139-179, 184-223, 226-243, 230A, 240A, 241A
Railroad Force Account Work	180-183, 224, 225, 225-A, 225-B, 225-C & 225-D, 224A, 225E, 225G, 225H, 225J & 225K
45A	152A, 153A, 156A

## LINE DATA

LENGTH OF PROJECT:  
Begin Project Sta. 51+00, End Project Sta. 83+11.72.  
Additions or deductions = None, Net Length of Project = 324.72 Lin. Ft. = 0.608 Miles.

LENGTH OF WORK:  
Innerbelt - Begin Work Sta. 47+72.00, End Work Sta. 83+11.72 = 3539.72 Lin. Ft.  
East Memorial Shoreway - Begin Work Sta. 46+50, End Work Sta. 87+24.17 = 4074.17 Lin. Ft.  
Add for Equations Sta. 61+47.03 (Back) = Sta. 61+37.90 (Ahead) = 9.13 Lin. Ft.  
Total Length of Work: 3539.72 + 4074.17 + 9.13 = 7623.02 Lin. Ft. or 1.443 Miles  
Revised Sheets 165, 169 and 170 5-13-59  
Added Sheet 170 A 5-13-59  
Revised Sheets No. 236 and 242, 5-14-59.  
Added Sheet No. 242-A, 5-14-59.  
Revised Sheets Nos. 199, 200 and 204 5-18-59  
Added Sheet 201 A 5-18-59  
Added Sheet 153 B 5-18-59  
Sheet 201 A superseded 201A dated 5-18-59 5-18-59  
Sheet 170 A revised 7-10-59

GRADE SEPARATIONS WITH THE PENNSYLVANIA AND THE NEW YORK CENTRAL RAILROADS



## LOCATION PLAN

STANDARD	DRAWINGS
B-T-50-70-THE-N-1	10-1-47
B-T-71 R	3-2-53
DR-1	1-3-55
G-7.07	6-1-56
L-J-N-1	7-1-55
T-J	5-1-56
OS-2	7-1-55
S-27 PC.2	3-15-48
I-2,3,4,5	2-20-45
I-8C.B.12A4B	5-1-52
I-8C.B.22A4B	5-1-52
I-8C.B.1344	5-1-52
I-8M.H.N-1	5-1-52
I-8M.H.N-1A	1-3-55
I-8M.H.N-2	5-1-52
L-3	4-1-50
L-3-A	4-1-50
RI-1	1-3-55
I-12	7-1-54
I-15-N-1	8-1-55
I-15-N-2	12-1-54
T-35	1-2-56
I-14 G	1-22-52
OS-1	7-1-55
L-1	4-1-50
A5-I-54	12-1-54
RB-1-55	3-1-55
I-15 N-2A	7-2-56

SUPPLEMENTAL SPECIFICATIONS			
L-209.12	7-17-54	5	6-8-55
M-110.27	9-9-52	6	12-28-55
S-103	Rev. 2-16-55	B-119	Rev. 12-14-55
S-107	Rev. 2-16-55	M-109.23	Rev. 4-20-55
M-106.6(d)	11-30-54	S-114	8-30-55

DEPARTMENT OF COMMERCE  
BUREAU OF PUBLIC ROADS

APPROVED:

DISTRICT ENGINEER

DATE

FILE NO. CUY-42R-19.78  
CUYAHOGA COUNTY  
DATE OF LETTING  
CONTRACT NO. 195



**MICROFILMED**  
SEP 12 1986  
**MICROFILMED**  
SEP 15 1986


# LOCATION PLAN


Scale: 1" = 200'

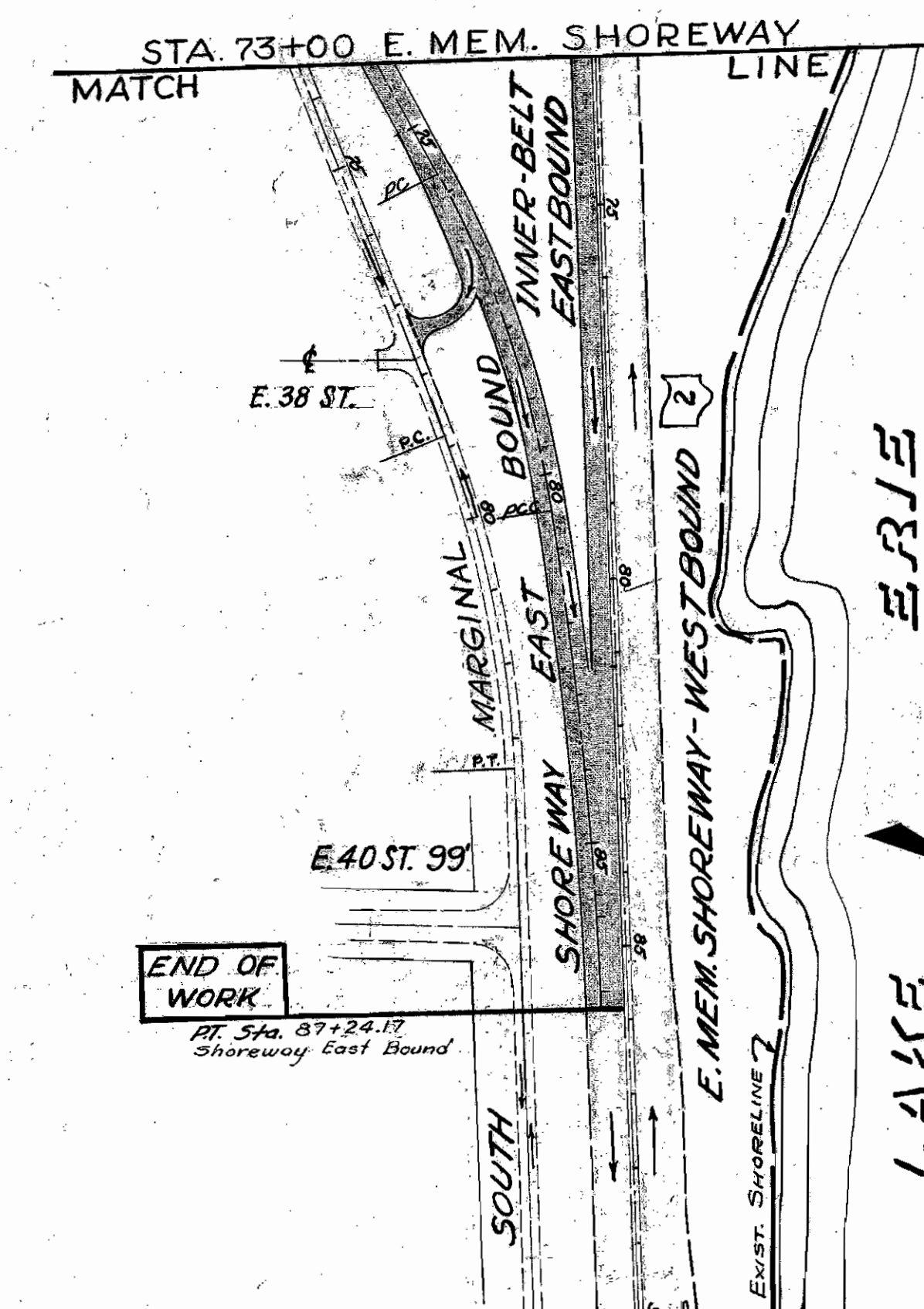
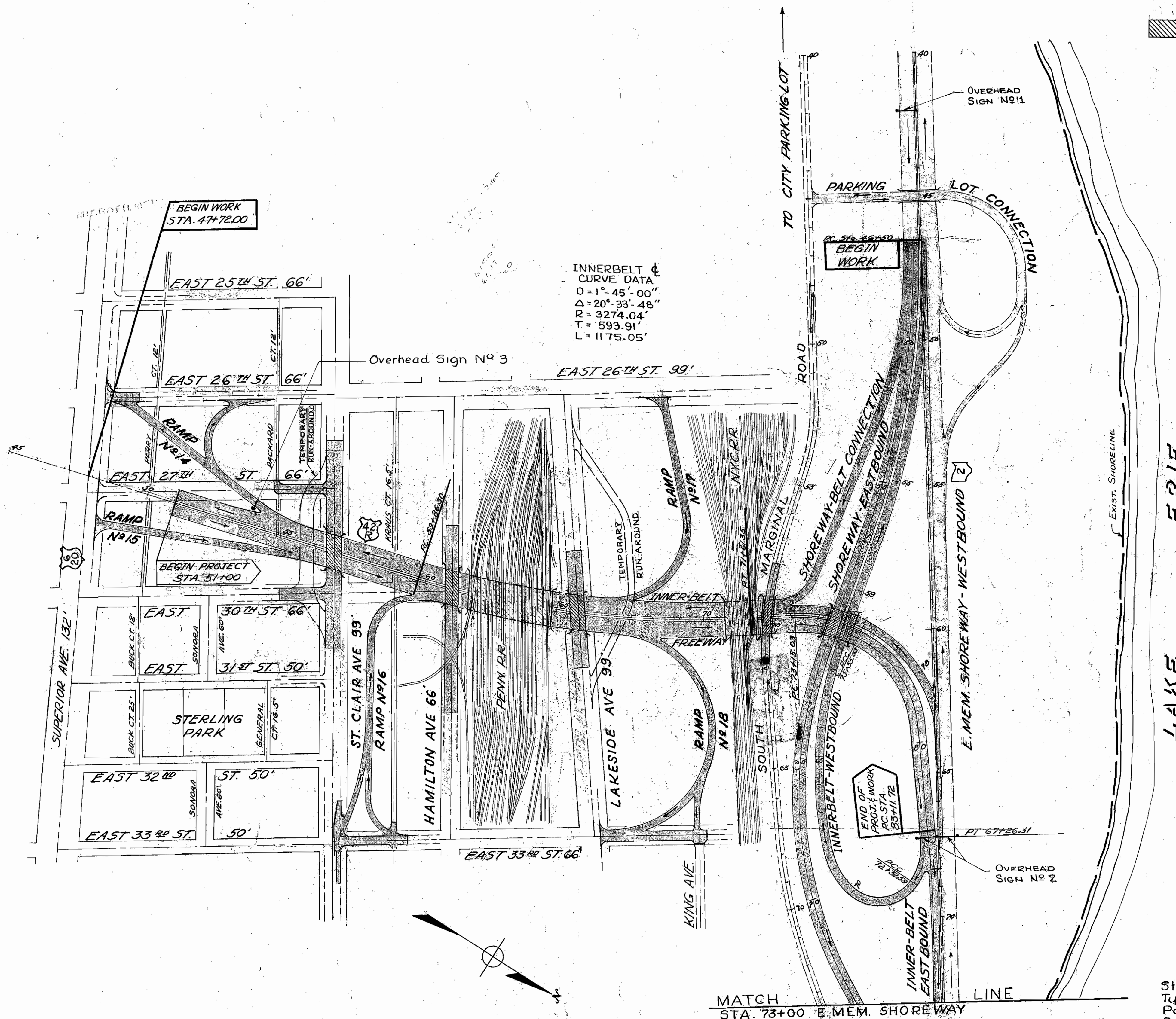
FED. RD. DIVISION	STATE	PROJECT	TYPE FUNDS
2	OHIO		

CUY. 42R - 19.78  
CUYAHOGA COUNTY

## LEGEND

 PROPOSED INNER-BELT FREEWAY,  
RAMPS & SHOREWAY INTER-CHANGE

 PROPOSED STRUCTURES



### OVERHEAD SIGN DATA

No 1

East Memorial Shoreway (E.B.)  
Station 42+00  
Type: OS-2-A  
Span A: 66'  
H = 3'  
1 Sign: 3' x 10'  
3 Sign Supports: 1', 5', & 5' from  
beam splice

Nº 3

Nose Ramp 14  
Station: 1+85  
Type: OS-1A  
Pole: 19'-6" (7Ga)  
B=14'  
H=3'  
2 Signs 3'x6', 3'x8'  
4 Sign Supports

No 2

East Mem. Shoreway (W.B.) & Innerbelt (E.B.)  
Station 67+25 (on E.M. Shoreway stationing)  
Type: OS-2-B  
Span A: 74'  
H = 3' & 4'  
3 Signs: 3'x10', 4'x13', & 4'x13'  
9 Sign Supports: 3-H=3' & 6-H=4'  
7', 12', & 17' from beam splice over  
E. Memorial Shoreway (W.B.).  
7', 7', 13', 13', 20', & 20' from beam splice  
over Innerbelt (E.B.).

# INNER-BELT FREEWAY & SHOREWAY INTER-CHANGE LOCATION PLAN



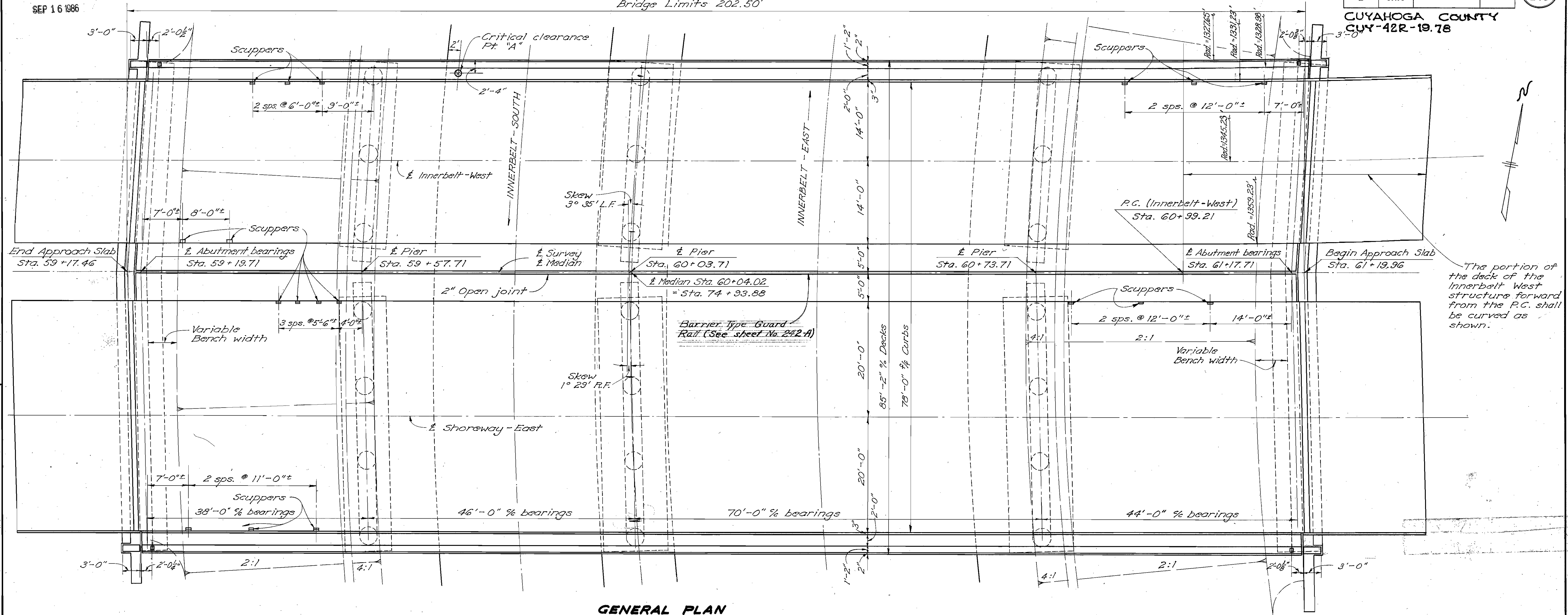
MICROFILMED  
SEP 16 1986

Bridge Limits 202.50'

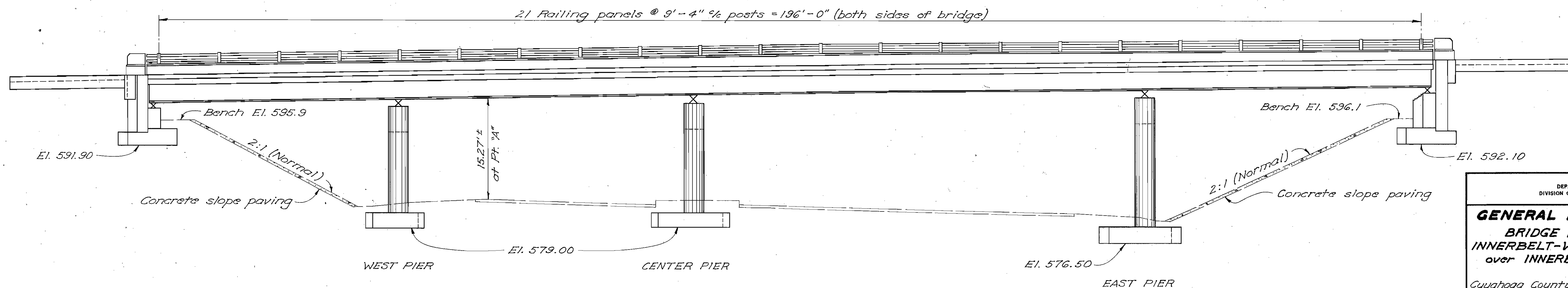
FED. RD. DIVISION	STATE	PROJECT
2	OHIO	

236  
243

CUYAHOGA COUNTY  
CUY-42R-19.78



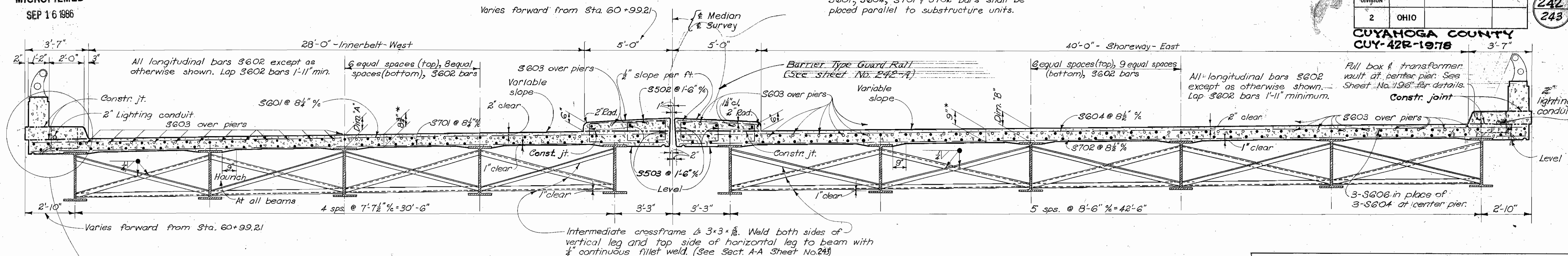
GENERAL PLAN



ELEVATION

STATE OF OHIO DEPARTMENT OF HIGHWAYS DIVISION OF DESIGN AND CONSTRUCTION BUREAU OF BRIDGES					
<b>GENERAL PLAN &amp; ELEVATION</b>					
BRIDGE No. CUY-42R-2023					
INNERBELT-WEST & SHOREWAY-EAST					
over INNERBELT-SOUTH & EAST					
Sta. 59+17.46 to 61+19.96					
Cuyahoga County					
DESIGNED NEY	DRAWN NEY	TRACED NEY	CHECKED Rog	REVIEWED BFG	DATE 6-27-56
					REVISED 5-12-59

§601, §604, §701 & §702 bars shall be placed parallel to substructure units.



### SECTION A-A-TYPICAL TRANSVERSE SECTION THRU DECK

For beam sizes see "PLAN OF STEEL FRAMING"

SLAB THICKNESS OVER BEAMS		
	Over 33 WF130 beams	Over 33 WF200 or 33 WF220
Dim. "A"	8 3/4" *	8 3/4" *
Dim. "B"	9 3/8" *	9" *

\*All slab thicknesses given include 1" for monolithic concrete wearing surface.

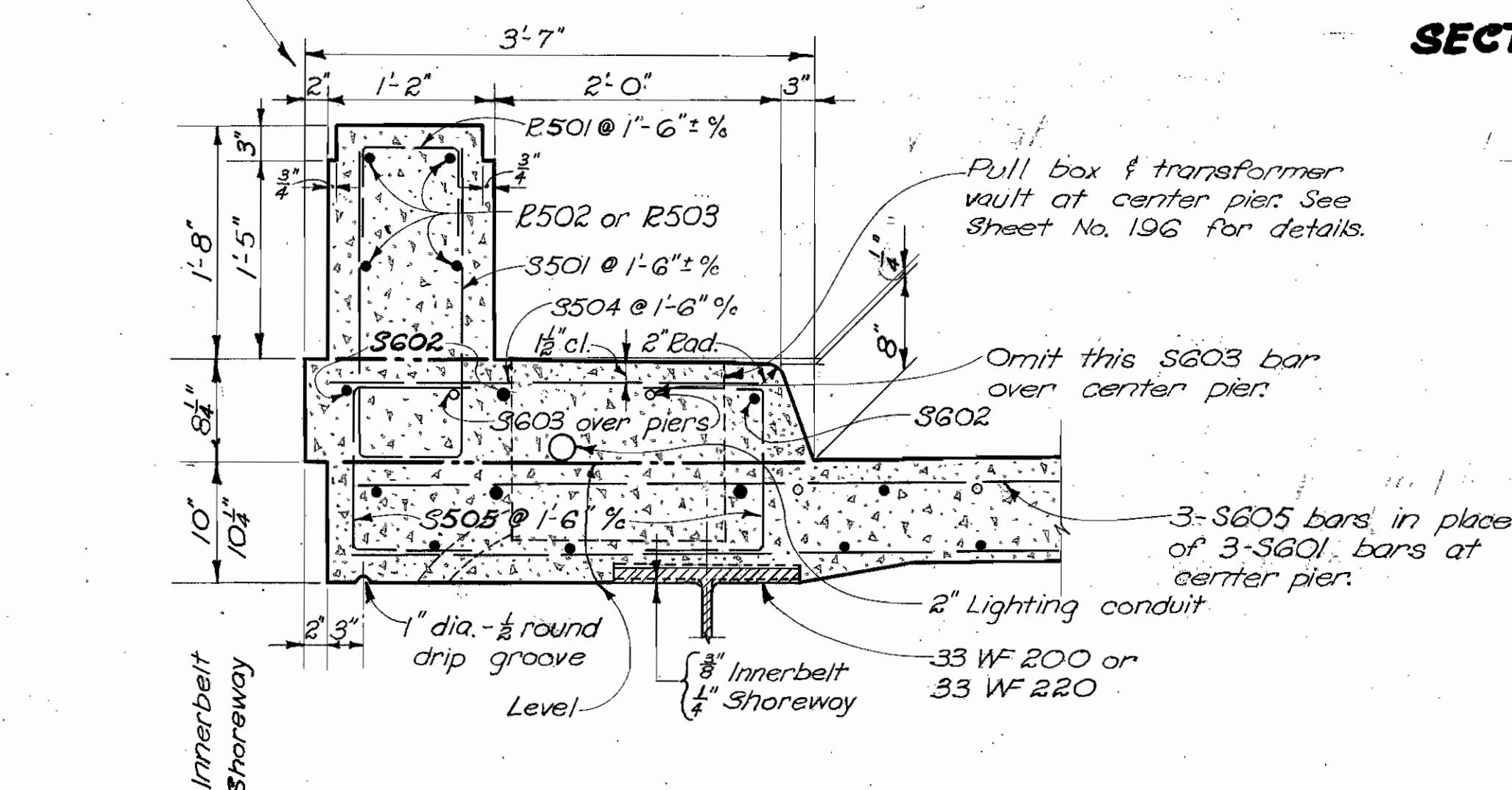
### NOTES

**WELDING** shall be Class "A". Any welds shown as field welds may, at the option of the Contractor, be made in the shop.

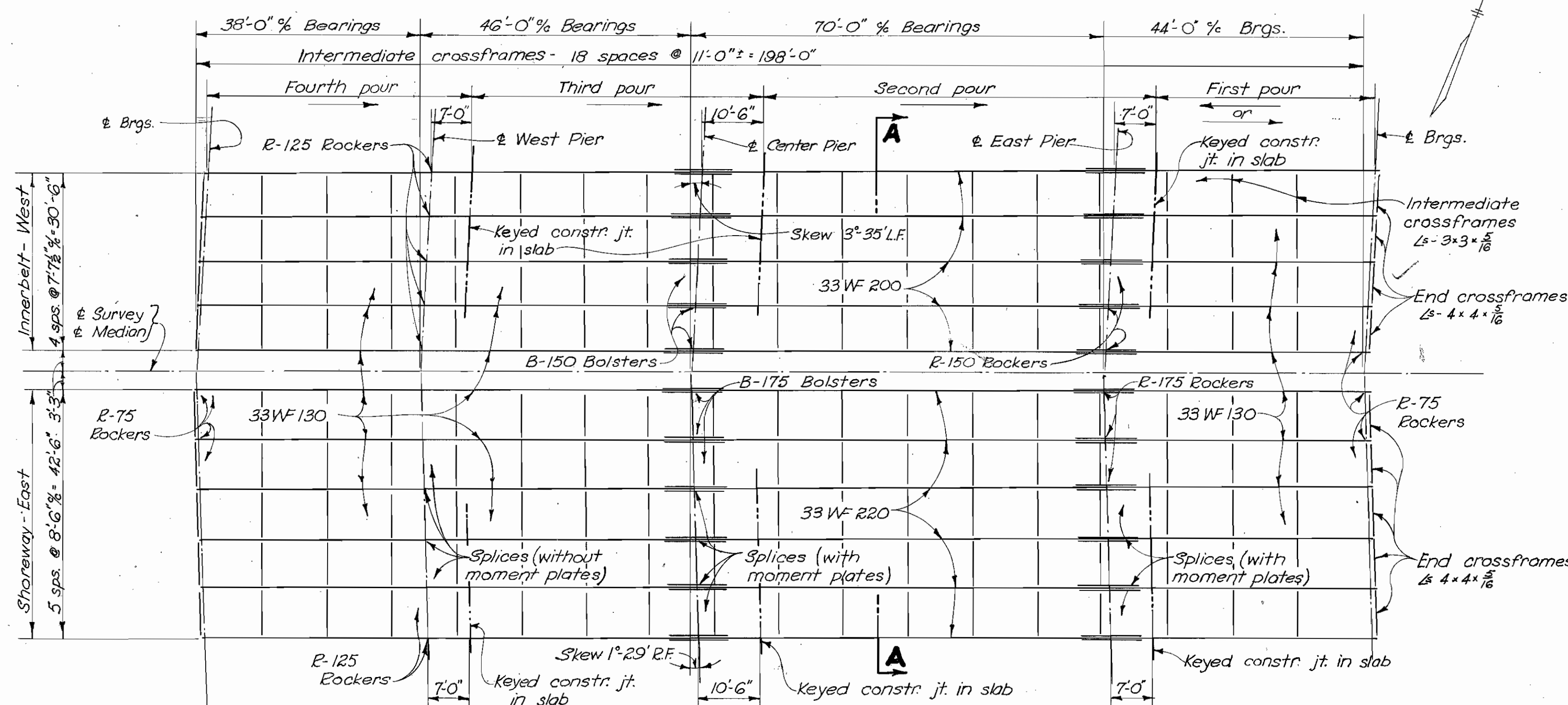
#### BEAM SPLICE WELDING PROCEDURE:

- 1.Raise end of beam at center pier 8".
- 2.Butt-weld beam flanges and web at west pier.
- 3.Lower end of beam at center pier to final position.
- 4.Raise end of beam at east pier 14".
- 5.Butt-weld beam flanges and web at center pier.
- 6.Weld top and bottom flange moment plates at center pier.
- 7.Lower end of beam at east pier to final position.
- 8.Make splice at east pier in the same manner as at center pier-raising the end of beam 8" on Innerbelt & 4" on Shoreway at the abutment.

**DECK CONSTRUCTION PROCEDURE:** The deck slab shall be placed in sections, between transverse construction joints, in the numerical order and in the direction indicated on "Plan of Steel Framing and Concrete Pouring Sequence", in order that the major portion of the dead load deflection will occur prior to placing concrete over each pier.

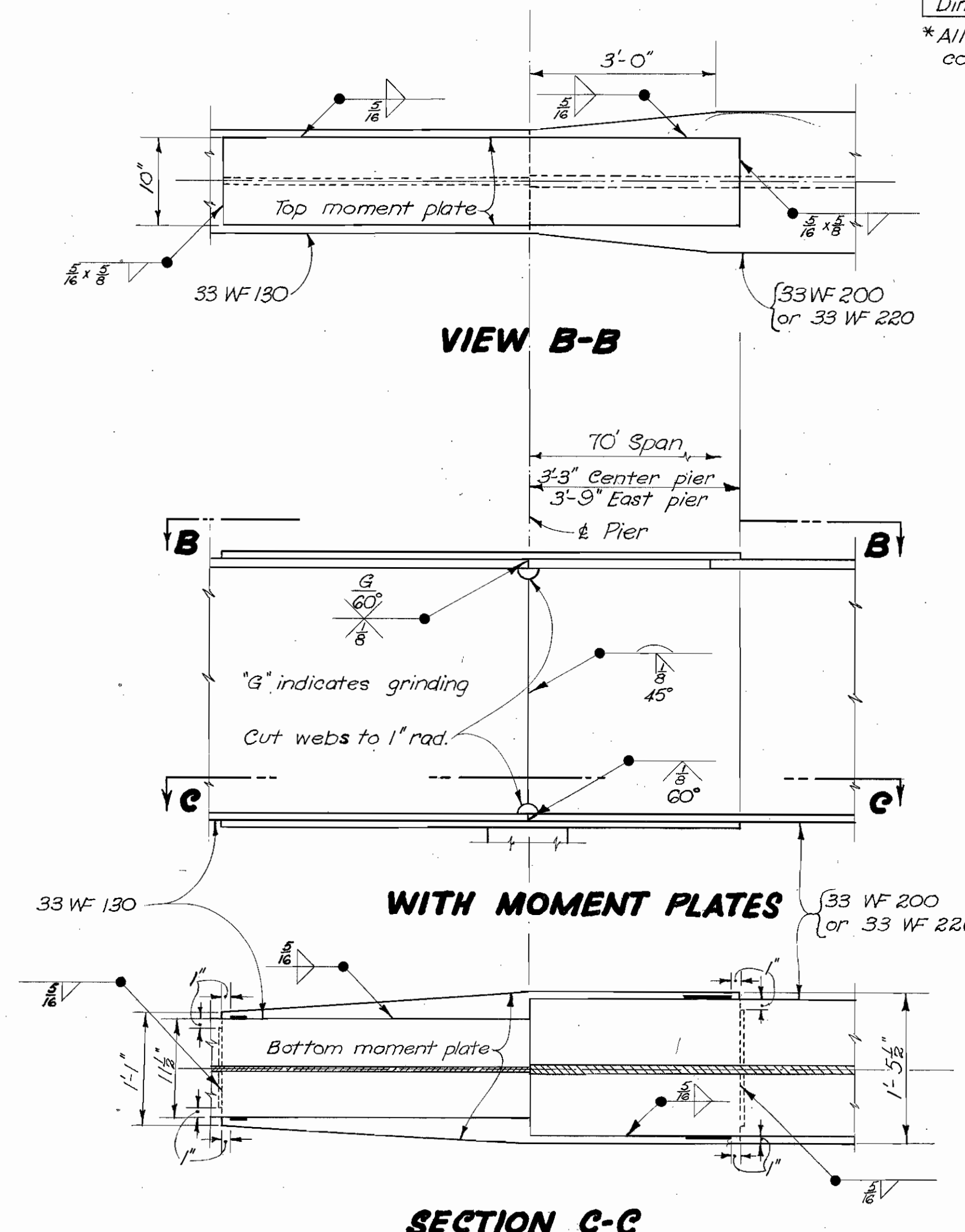


### DIAGRAM SHOWING STAGGER OF §603 BARS OVER PIERS



### PLAN OF STEEL FRAMING, AND CONCRETE POURING SEQUENCE

For Diagram of Deflection and Camber see Sheet No.239.



### SECTION C-C

MOMENT PLATE SIZES			
	Center Pier		East Pier
Innerbelt West	Top: 12 3/8" x 14'-0"	Top: 12 3/8" x 15'-0"	Top: 12 3/8" x 15'-0"
	Bot: 12 3/8" x 14'-0"	Bot: 12 3/8" x 15'-0"	Bot: 12 3/8" x 15'-0"
Shoreway East	Top: 12 3/8" x 15'-0"	Top: 12 3/8" x 15'-0"	Top: 12 3/8" x 15'-0"
	Bot: 12 3/8" x 15'-0"	Bot: 12 3/8" x 15'-0"	Bot: 12 3/8" x 15'-0"

### BEAM SPLICE DETAILS

### WITHOUT MOMENT PLATES

STATE OF OHIO DEPARTMENT OF HIGHWAYS DIVISION OF DESIGN AND CONSTRUCTION BUREAU OF BRIDGES					
SUPERSTRUCTURE DETAILS BRIDGE NO. CUY-42R-2023					
INNER BELT- WEST & SHOREWAY-EAST OVER INNERBELT-SOUTH & EAST Cuyahoga County Sta. 59+74.6 to 61+13.96					
DESIGNED NEY	DRAWN NEY	TRACED RBT	CHECKED RBT	REVIEWED BFG	DATE 9-27-56
					REVISION 1-23-59 57-59